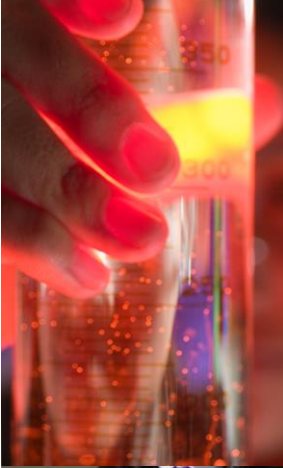
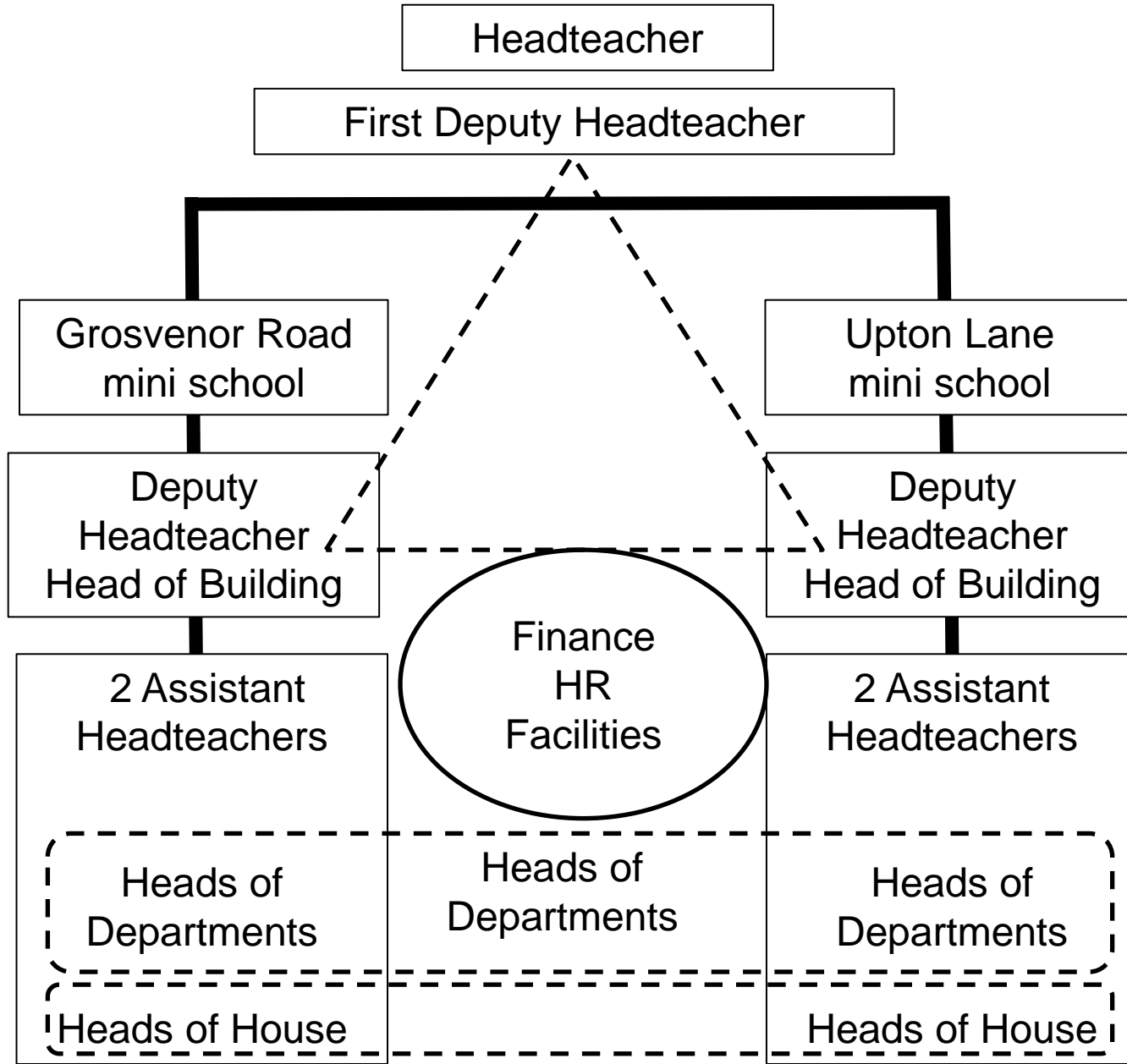


Stratford School Academy Sep. 2015 onwards



BETA This is a new service – your [feedback](#) will help us to improve it.

Now published: all 2017/2018 data. For details of when we plan to release 2018/2019 data, see the [publication timetable](#). [Hide message](#)

Add a school or college to start your comparison list [Add this school](#)

[Back to overview page](#)

[Search for another school](#)

Stratford School Academy

Stratford School Academy

Address: Upton Lane, London, E7 8PR
 School type: Academy - Converter mainstream
 Education phase: Secondary
 Gender of entry: Mixed
 Ofsted rating: **2** Good | Ofsted report
 Inspected 23 May 2017
 Local authority: Newham
 Headteacher/Principal: Mr Andrew Seager
 Age range: 11 to 18
 Religious character: None
 Admissions policy: Non-selective
 Unique reference: 138978
 Website: School website
 Apply for a place: Secondary
 Further information: [Get information about schools](#)
 Download data 2018-2019: [Download data](#)
 Compare similar schools: [Secondary](#)

Share this page

[Twitter](#) [Facebook](#) [Email](#) [LinkedIn](#)

Add to comparison list

View comparison list (0)

[Show map](#)

Secondary Absence and pupil population Workforce and finance

This is final data for 2017/2018

[About these results](#)

Progress 8 score

Average 0.04

[More score details](#)

Entering EBacc



Staying in education or entering employment



Grade 5 or above in English & maths GCSEs



Attainment 8 score



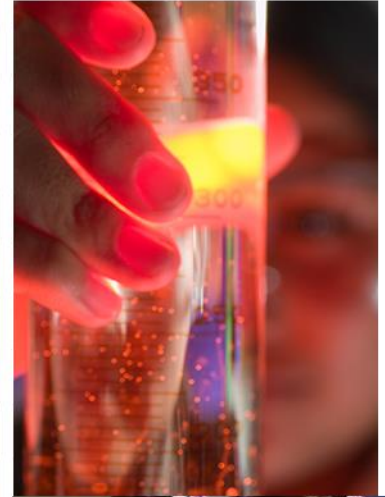
EBacc average point score



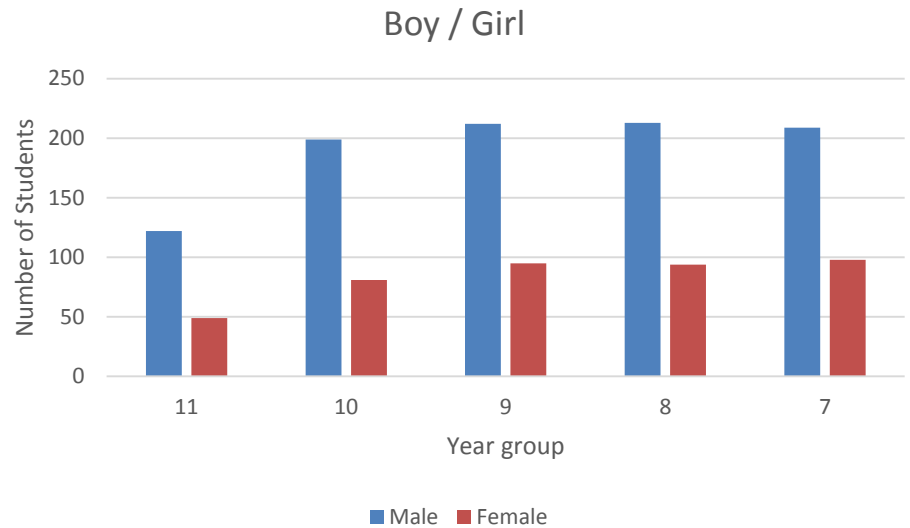
[Results over time](#)

[Results by pupil characteristics](#)

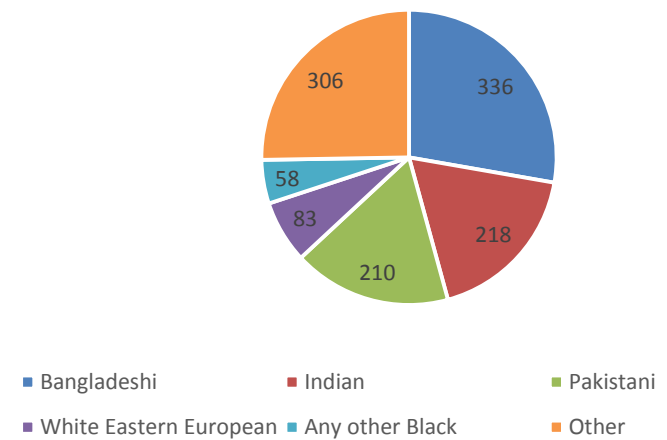
Compare schools is good but doesn't provide enough context to the headline data. The next two slides do ...



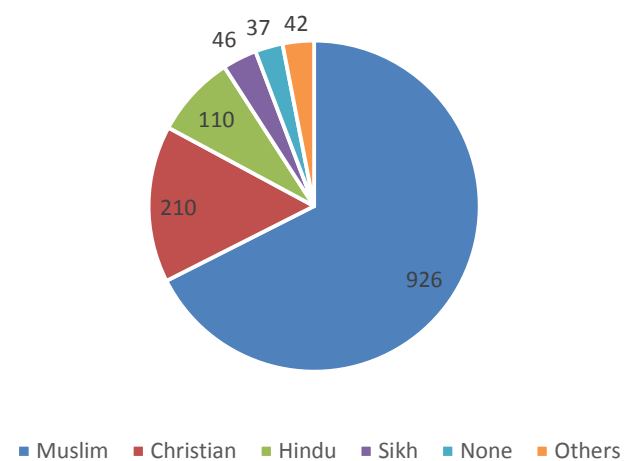
Our pupil demographic results



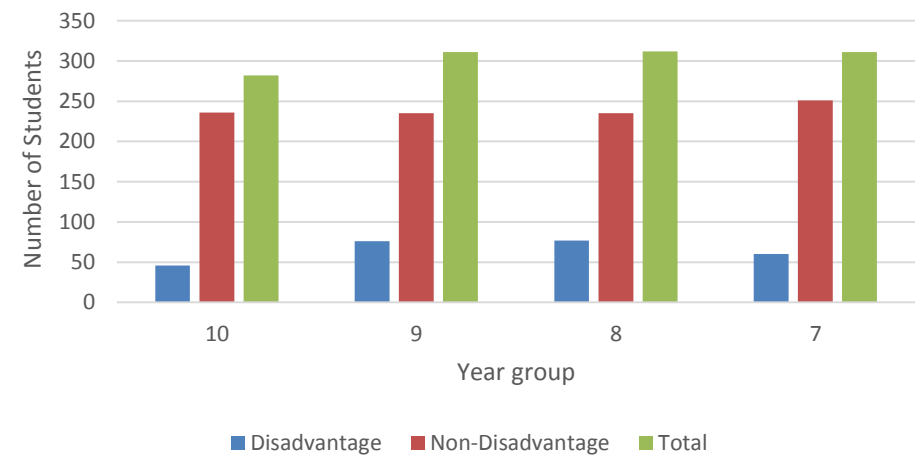
Number of pupils - Ethnicity



Religion Number of pupils



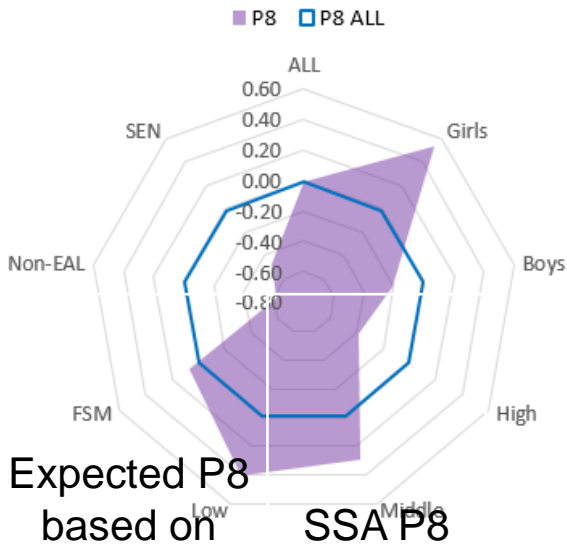
Disadvantage - Non-Disadvantage



This has a knock on effect on expected and actual results ...



Progress 8 GCSE Summer 2018



Adjusted figures for Progress 8 to reflect the proportion of disadvantaged pupils at SSA:

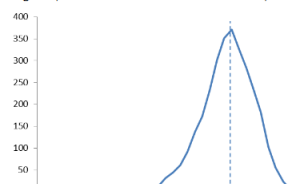
National P8 Adjusted to SSA Proportions	SSA P8
-0.18	0.04

Adjusted figures for Progress 8 to reflect the proportion of boys and girls pupils at SSA:

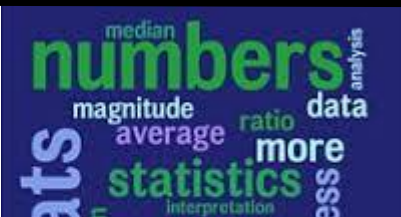
National P8 Adjusted to SSA Proportions	SSA P8
-0.12	0.04

Characteristic	National Percentage (2016.17)	SSA percentage (2017.18)	national figure (2016.17)	for this group (2017.18)
Disadvantaged pupils	27%	56%	-0.40	0.07
Other pupils	73%	44%	0.11	-0.09
Boys	50%	71%	-0.24	-0.21
Girls	50%	29%	0.18	0.54

Figure 5: Distribution of Progress 8 scores England, state-funded mainstream schools*, 2016



A Progress 8 score of above 0 means a school is making above average progress.



The School Development Plan is coming to an end.

Two actions are outstanding and will keep us busy this year whilst the new plan is developed ...

Developing disciplinary literacy ...

Stratford School Academy
School Development Plan 2016-19

LOSING THE CABULARY GAP

Curriculum Disciplinary Literacy

Ensure that all pupils be able to read, understand and answer GCSE questions

Stratford School Academy
School Development Plan 2016-19

Outcome: Progress 8 Score of 0.35, Attainment 8 score of 5 & 50% **EnMa**

SDP Action	Lead	Action plans	Lead Indicators	Targets	Committee
Ensure that, through good management the Academy's teaching force is highly effective: that the right staff are recruited, that staff stay fit and healthy and, through good quality training and line management, teach lessons to a high standard as a matter of course.	MPR	CDA MRO SM		ABC	R
In the minority of subjects to which this applies, improve standards of teaching so that pupils make the progress that they should					R
Incrementally improve pupil outcomes by developing the Direct Instruction Model and increasing expertise					
Ensure that all pupils have the reading and writing skills to be able to read, understand and answer GCSE questions					
Improve the level of pupil self-regulation so that all pupils can take full advantage of the teaching the school offers					
Ensure that the behaviour of all and not just the majority of pupils is such that all pupils are able to focus on achieving the best educational outcomes that they can.	ADI				

Improving pupils' self regulation ...

VISIBLE LEARNING
A SYNOPSIS OF CURRENT META-ANALYSES

Self Reported Grades

Pupils seeing school work as interesting or important

Motivation

Ensure that all pupils can take full advantage of the teaching the school offers

Outcome: Improve the level of pupil self-regulation so they can take full advantage of the teaching the school offers

SDP Action

MPR
ADI

